

Passenger Conduct & Responsibility

- Passengers are required to pay the necessary fare before their ride(s). Passengers will be charged the \$2.00 route fare for any scheduled deviations on routes, or the \$2.50 fare for any demand response (Dial-A-Ride) no-call, no-shows
- Hiawathaland Transit provides curb to curb service only; drivers do not help individuals into homes; apartment buildings or businesses
- Passengers may board with items/bags that can be carried on and off the bus in a single trip and must remain under their full control
- Inappropriate language, bothering other passengers, horseplay, fighting, carrying of weapons, or possession of illegal drugs will not be tolerated
- No eating, drinking, or open containers; no smoking on buses including E-cigarettes

Fares

Single Ride Cash (Route).....\$2.00
Deviation charge (Route).....\$0.50
Single Ride Cash (Dial-a-Ride)...\$2.50

Contact dispatch for pricing on monthly passes

Additional Information

- Each bus is handicap accessible
- 24 hour advance notice is encouraged for any ride needing the use of a lift
- Assistants accompanying a person with a disability ride free
- Tokens or passes are encouraged
- Drivers DO NOT make change
- Children 2 and under ride free with a paying adult. Maximum 1 free child per adult
- Up to a 4 block route deviation may be available upon request through our dispatch specialists and will be subject to \$0.50 deviation charge
- No cost for ONE immediate transfer to another route at the Transfer Station
- Buses DO NOT enter trailer/mobile home parks, apartment complexes, or multi-use/multi-family dwellings
- Please understand traffic and weather conditions may delay buses
- Tokens and/or passes can be purchased at Cub Foods and Just Food Co-op

Services

ROUTES
Weekdays - 6:00 am - 6:00 pm

DIAL-A-RIDE
Weekdays - 6:00 am - 9:00 pm
Saturdays– 7:00 am - 5:00 pm

DISPATCH
Weekdays - 5:30 am - 6:00 pm
Saturday – 7:30 am – 4:00 pm
Closed Sunday

Holidays No Service

**NEW YEARS DAY
EASTER SUNDAY
MEMORIAL DAY
JULY 4TH
LABOR DAY
THANKSGIVING & FRIDAY AFTER
CHRISTMAS EVE & CHRISTMAS DAY
NEW YEARS EVE**

Additional reduced service may precede or follow holidays.

Announcements will be posted on the buses, website and social media.

EFFECTIVE JANUARY 2, 2024



Call Dispatch Toll Free:
866-623-7505
email: tdispatchers@threeriverscap.org
www.threeriverscap.org

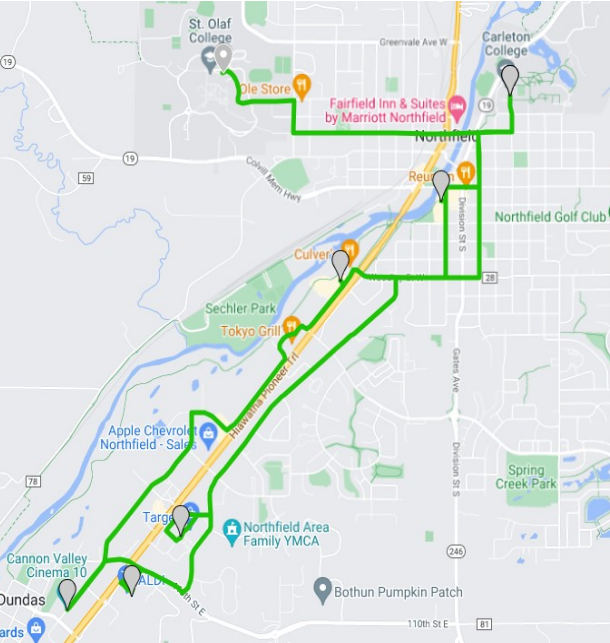


Hiawathaland Transit is administered by
Three Rivers Community Action, Inc.
TTY-MN Relay Service
1-800-627-3529

Three Rivers Community Action, Inc. will not discriminate because of ethnicity, race, color, creed, religion, national origin, sex, sexual orientation, disability, age, marital status, membership or activity in a local human rights commission, or status with regard to public assistance.

EXPRESS ROUTE

Express Route is only available during the St. Olaf and Carleton College School Year



The Express Route times are on the hour

MON-SAT 3:00pm - 10:00pm	
1. St. Olaf	:00
2. Carleton	:07
3. Food Co-op	:12
4. Cub/Target	:20
5. Aldi	:26
6. Cinema 10	:32
7. El Tequila	:38
2. Carleton	:47
1. St. Olaf	:53



Routes operate Monday through

Friday, 6:00am - 6:00pm

All route times are on the hour

Blue Route

1. City Hall	:00
2. Family Fare	:02
3. Carleton College	:07
4. Northfield Estates	:12
5. Viking Terrace	:15
6. Greenvale/Wellstone Apartments	:23
7. Oak Apartments	:25
8. Ensley Apartments	:30
9. Northfield Manor	:35
10. St. Olaf College	:42
11. Library	:48
1. City Hall	:50

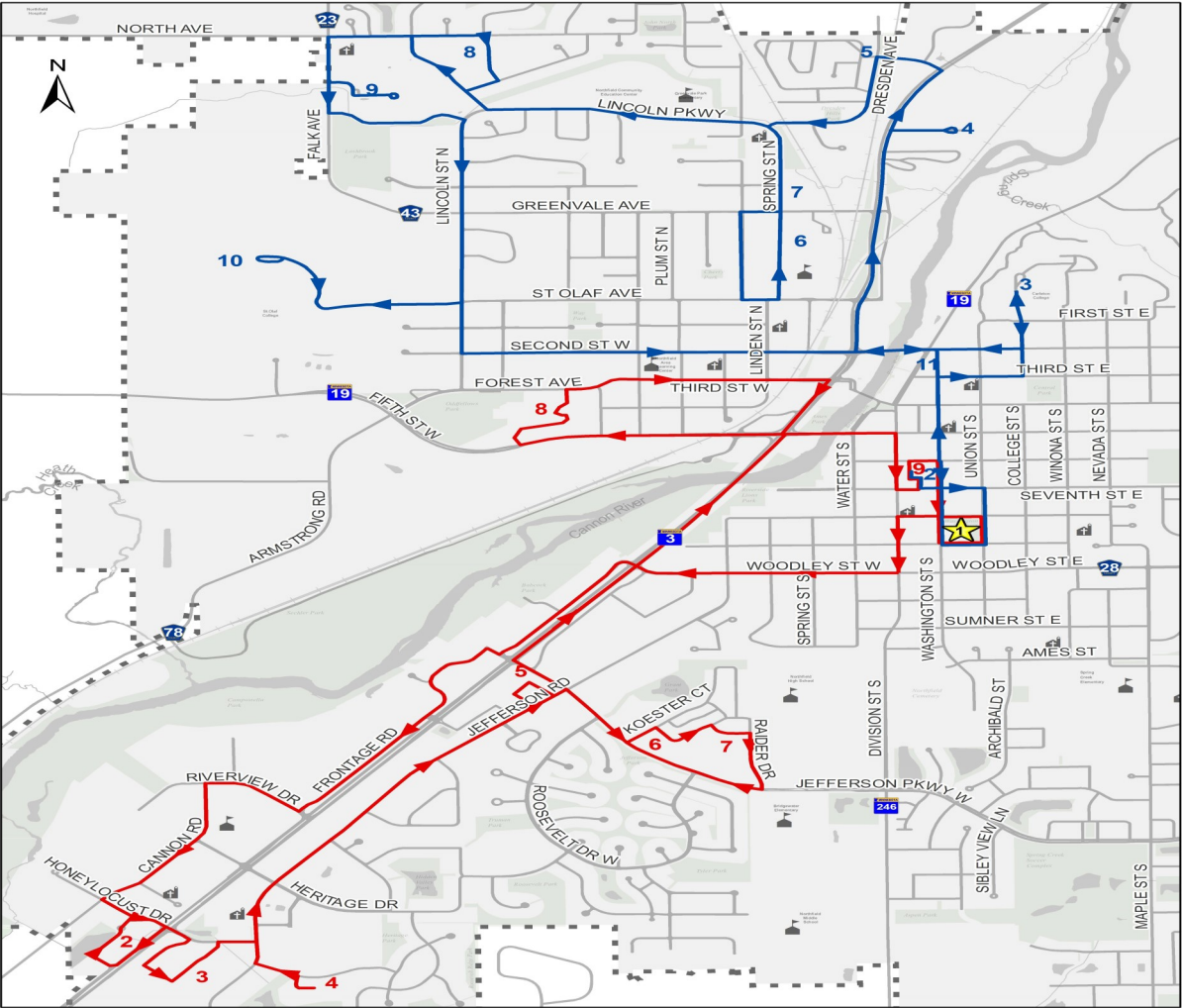
Red Route

1. City Hall	:00
2. Dollar Tree	:12
3. Target/Cub Foods	:14
4. YMCA	:16
5. Allina Clinic	:23
6. Koester Court	:27
7. NCRC	:30
8. Three Links	:40
9. Family Fare	:47
1. City Hall	:50

Check us out on YouTube!



Visit our Website!



The following locations are available on

RED ROUTE by request:

- ♦ American Inn
- ♦ Clothes Closet
- ♦ Culver's
- ♦ Davita Dialysis
- ♦ Merchants Bank
- ♦ Perkins
- ♦ Urgent Care

The following locations are available on

BLUE ROUTE by request:

- ♦ Carboni's Pizza
- ♦ Clothes Closet
- ♦ General Dollar
- ♦ Merchants Bank
- ♦ Northfield Extended Stay
- ♦ Post Office